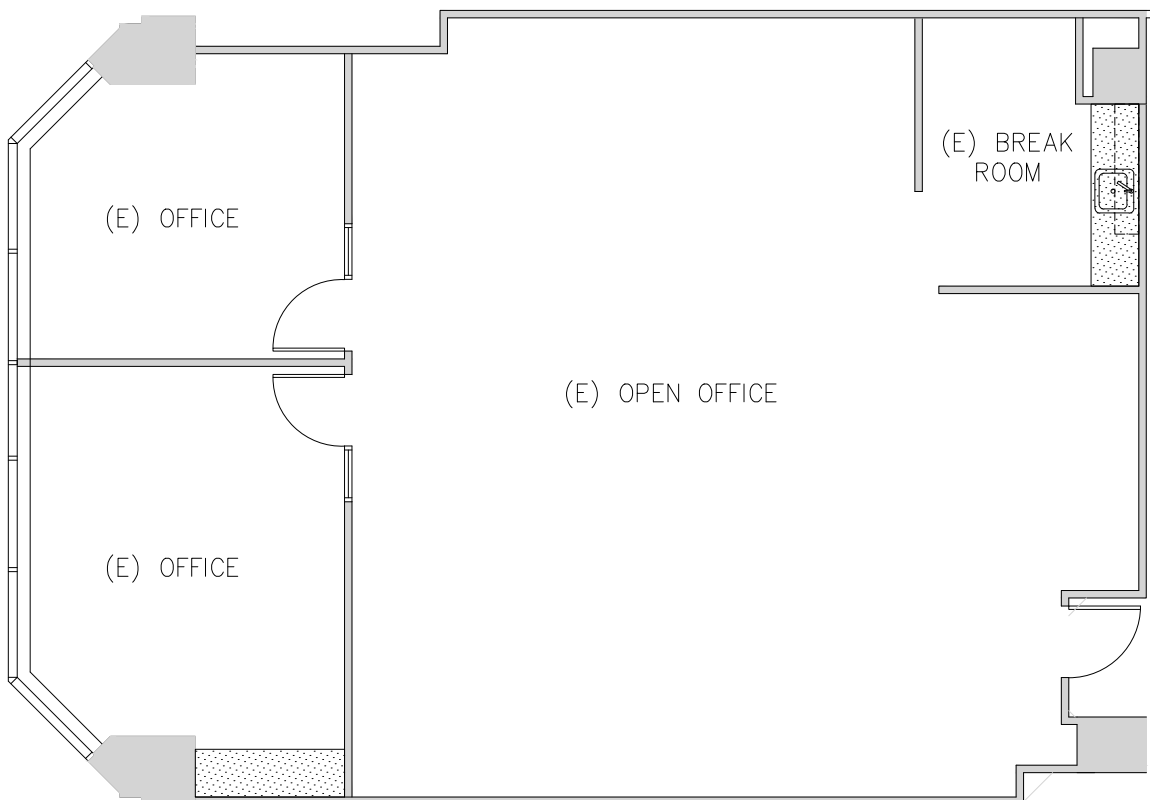




LAKE MERRITT  
PLAZA

## SUITE 2040 - 1,843 RSF

Small suite on the upper floor; 2 private offices, kitchen, open area.



[lakemerritt-plaza.com](http://lakemerritt-plaza.com)

**Charles F. Allen, LEED AP**  
Principal, Managing Director  
RE Lic #01158267  
[charlie.allen@avisonyoung.com](mailto:charlie.allen@avisonyoung.com)  
510.254.4260

**Anthony Shell, LEED® AP**  
Principal  
RE Lic #01743033  
[anthony.shell@avisonyoung.com](mailto:anthony.shell@avisonyoung.com)  
510.254.4263

**Amber Merrigan**  
Vice President  
RE Lic #01905162  
[amber.merrigan@avisonyoung.com](mailto:amber.merrigan@avisonyoung.com)  
510.254.4267

**BEACON**  
CAPITAL PARTNERS  
DISTINCTIVE WORKPLACES  
DISTINCTLY BEACON

**AVISON  
YOUNG**